

59

THE UNIVERSITY OF ALABAMA
PRESENTS

59

HELL: PARADISE FOUND

WRITTEN AND DIRECTED BY
SETH PANITCH

JULY 10 - 22, 2012

E

:BILL THEATER B



THE UNIVERSITY OF ALABAMA PRESENTS

HELL

PARADISE

FOUND

WRITTEN AND DIRECTED BY

SETH PANITCH

WWW.HELLPARADISEFOUND.COM

SIMON ACKERMAN MATT LEWIS
THE INTERVIEWER SETH PANITCH
LUCIFER/VLAD THE IMPALER CHIP PERSONS*
GOD DIANNE TEAGUE
GABRIEL/SINATRA/SHAKESPEARE PEYTON CONLEY
ADAM/DON JUAN/ELVIS LAWSON HANGARTNER
EVE/LIZZIE BORDEN ALEXANDRA FICKEN
MARIA TERESA STACY PANITCH

MUSICIANS

PIANO/CONDUCTOR RAPHAEL CRYSTAL
TRUMPET ROB ALLEY
SAXOPHONE GAINES BRAKE
TROMBONE HUGH LEE
BASS CHRIS KOZACK
DRUMS PAUL OLIVER

SCENIC AND LIGHT DESIGN
BRIAN ELLIOTT

COSTUME DESIGN
TIFFANY N. HARRIS

COMPOSER AND ARRANGER
RAPHAEL CRYSTAL

COMPOSER
TOM WOLFE

DIALECT COACH
ALLISON HETZEL

CHOREOGRAPHER
STACY ALLEY

ASSISTANT DIRECTOR/PRODUCTION STAGE MANAGER
JEREMY COX

PRODUCTION MANAGER
WILLIAM TEAGUE

GENERAL MANAGER
THOMAS ADKINS

The show will run approximately 88 minutes without an intermission.

CHIP PERSONS

(*Lucifer, Vlad the Impaler*)

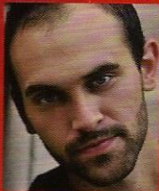


Chip appeared in *Svejk at the Duke* on 42nd Street and *Andorra* at the Lucille Lortel Theatre with Theatre for a New Audience, in *Foodstable* at HERE Arts Center, in *Cold* at the Bank Street Theatre, in *Hamlet* at the Michael Weller Theatre, in

Richard III at La MaMa ETC, and in *Godard* at the Ohio Theatre. He's appeared in six seasons with the Colorado Shakespeare Festival in roles such as Richard III, Angelo in *Measure for Measure*, Dogberry in *Much Ado About Nothing*, Bob Ewell in *To Kill a Mockingbird*, and King Louis XIII in *The Three Musketeers*. His television roles include a drug dealer with a Ph.D. in Chemistry on *Law and Order* and a guy infected with a computer virus in an AOL National commercial. Chip is on the Theatre faculty of the University of Colorado. He earned his MFA from Columbia University and BFA from the University of California, Santa Barbara.

PEYTON CONLEY

(*Gabriel, Shakespeare, Sinatra*)

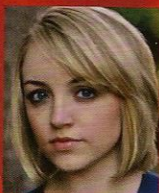


Peyton is a recent graduate of the MFA acting program at the University of Alabama. He most recently appeared as Andrew in the Cuban Ministry of Culture's production of *Beyond Therapy* (*Mas Que Terapia*) directed by Seth Panitch. UAMFA credits

include *The Seagull* (Trepnev), *The Bourgeois Gentleman* (Jourdain), *The Time of Your Life* (Tom), and *Saint Joan* (Charles). Regional credits include *The Drowsy Chaperone* (Aldolpho), and *Fat Pig* (Carter).

ALEXANDRA FICKEN

(*Lizzie Borden, Eve, Victim*)

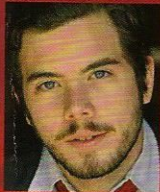


Alexandra received her BA in Theatre and Dance from The University of Alabama and is currently working professionally in Atlanta, GA. Regional credits include: *Saint Joan* (Joan), *Transit of Venus* (Celeste), *An Enemy of the People* (Petra), and working

with the Cuban Ministry of Culture in *El Sueño de una Noche de Verano* (*A Midsummer Night's Dream*), directed by Seth Panitch.

LAWSON HANGARTNER

(*Adam, Don Juan, Elvis, Rapist*)



Lawson is excited to be making his Off-Broadway debut at 59E59 Theaters. Representative roles at the University of Alabama: Henry in *Henry V*, Burrs in *The Wild Party*, Berger in *Hair*. Lawson also performed as Morros in *El Sueño de una Noche de Verano*

(*A Midsummer Night's Dream*) with the Cuban Ministry of Culture, directed by Seth Panitch.

MATT LEWIS

(*Simon Ackerman*)



Matt received his MFA from The University of Alabama and his BA in Theatre and Performance Studies from Kennesaw State University in Georgia. Regional credits include *Buddy: The Buddy Holly Story*, *Great Expectations* (Georgia Ensemble); *Cannibal!*

The Musical, *Song of the Living Dead* (Dad's Garage); and *Six Degrees of Separation* (Charlotte Repertory). UA credits include *An Enemy of the People* (Dr. Stockmann), *Animal Crackers* (Capt. Spaulding), *Saint Joan* (Warwick), and *The Time of Your Life* (Nick). Film credits include *Disney Shot Kennedy* (Modest Conspiracy Films 2010).

STACY PANITCH

(*Maria Teresa*)

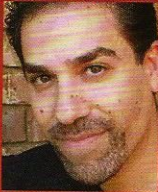


Stacy is thrilled to be making her Off-Broadway debut at 59E59 Theaters. Stacy received a BFA in Acting/Directing from Northern Kentucky University and an MFA in Acting from The University of Alabama. Stacy made her New York debut in Seth

Panitch's *Dammit, Shakespeare!* at Urban Stages in 2006 and continues to perform regularly in and around Tuscaloosa, Alabama. Regional credits include *The Miracle Worker* (Annie Sullivan), *Blithe Spirit* (Ruth), *Assassins* (Sara Jane Moore), *Death and the Maiden* (Paulina), and *Falsettas* (Cordelia).

SETH PANITCH

(*Director/Playwright; The Interviewer*)



Seth Panitch is Associate Professor of Acting and directs the MFA and Undergraduate Acting programs at the University of Alabama.

A professional director, actor and playwright, Seth has worked internationally in Havana, Cuba with the Ministry of Culture

(directing productions of *The Merchant of Venice*, *A Midsummer Night's Dream* and *Beyond Therapy* at the Teatro Bertholt Brecht and Teatro Adolfo Laurado), Off-Broadway at the Westbeth Theater Center, Urban Stages Theatre, and The Raw Space, regionally at the Utah Shakespeare Festival, Colorado Shakespeare Festival, Texas Shakespeare Festival and Idaho Repertory Theatre, and in Los Angeles at the Globe Playhouse, Odyssey Theatre, Complex Theatre, Ventura Court Playhouse and the Hillside Repertory Theatre. His documentary *A Night in the Theatre* has been published by Insight Media and his plays *Dammit, Shakespeare!* and *What's Taking Moses So Long?* have received critical success in both New York and Los Angeles productions. In 2010, Seth received the Alabama National Alumni Association's 'Outstanding Commitment to Teaching Award' and was named the Druid Arts Educator of the Year. Seth received his MFA in Acting at the University of Washington's Professional Actor's Training Program under Jack Clay and is a member of the Society of Stage Directors and Choreographers.

DIANNE TEAGUE

(God)



At the University of Alabama, as either Guest Artist or student: Arkadina in *The Seagull*, Mrs. Kendal in *The Elephant Man*, the Countess of Rossillion in *All's Well That Ends Well*, Madame Arcati in *Blithe Spirit*, Nurse in *Romeo and Juliet*, among many others.

At Theatre Tuscaloosa, multiple seasons, including: Sister Aloysius in *Doubt*, Linda in *Death of a Salesman*.

JEREMY COX

(Assistant Director/Production Stage Manager)

Originally from Kansas City, Jeremy is a graduate of the MFA program at the University of Alabama. While at the University, Jeremy performed in a variety of productions, developed community outreach programs and served in international/educational exchanges, including assisting Professor Seth Panitch with a sequence of master classes in Havana, Cuba. Jeremy also performed alongside Cuban actors in a Ministry of Culture-produced production of *The Merchant of Venice* in Havana. In recent years, Jeremy has been working in regional theatre throughout the Midwest. He now currently resides in Tennessee with his lovely wife, Meredith, teaching Theatre at the University of Tennessee-Chattanooga.

BRIAN ELLIOTT

(Set and Lighting Designer)

Brian graduated from the University of Alabama with a Master's of Fine Arts in Lighting Design. He received his Bachelor's of Fine Arts in Theatrical Design/Production from Auburn University in 2005. Since then, Brian has worked at the Merry-Go-Round Playhouse in upstate New York, the national and international tour of *Disney on Ice*, and the Alabama Shakespeare Festival. Previous UA lighting design credits include: *Hair!*, *A Winter's Tale*, *Candide*, *An Enemy of the People*, *Rose Tattoo*, *Flora the Red Menace*, *Big River*, *Animal Crackers* and *Chicago*.

TIFFANY M. HARRIS

(Costume Designer)

Tiffany is a third year graduate student at the University of Alabama, working toward an MFA in Costume Design and Production. She received her BFA in Theatre Technology and Costume Design from Texas State University in San Marcos, Texas in 2009. University of Alabama costume design credits include *Animal Crackers*, *Screwtape*, UA Opera's *In a Garden*, and Alabama Repertory Dance Theatre's *Mist Memory* and *Walk the Line*. She also designed hair and makeup for *Chicago* this past spring semester. Other recent work include the Costume Design for *Too Many Husbands* with Different Stages Inc. in Austin, Texas, and Costume Shop Supervisor and Hair and Makeup Designer for *Twelfth Night* at the Emily Anne Theatre and Gardens in Wimberley, Texas.

RAPHAEL CRYSTAL

(Composer/Arranger)

Raphael is the founder and director of the musical theatre program of the Department of Theatre and Dance. Active professionally as a composer, musical director, and pianist, he received a NY Outer Critics Circle Award for Best Off-Broadway Musical for his score for the show *Kuni-Leml*. Recent premieres of his music include filmed sequences for the new Ripley's Believe-It-Or-Not in Times Square, *MegaHeroes* at the Birmingham Children's Theatre, and *The Bourgeois Gentleman* at the Jean Cocteau Repertory Theatre in New York. He has served as musical director for shows throughout the country, from New York to SummerTide Theatre in Gulf Shores, Alabama. He is a member of ASCAP, The Dramatists Guild, the Musical Theatre Educators Alliance, SETC, and the Birmingham Art Music Alliance, and an alumnus of the BMI/Lehman Engel Musical Theatre Workshop.

STACY ALLEY

(Choreographer)

Stacy Alley teaches musical theatre/dance at the University of Alabama. Recent credits include *A Chorus Line* and *Buddy: The Buddy Holly Story* at Forestburgh Playhouse in NY as well as *Dames at Sea* at SummerTide Theatre. Stacy is a member of Screen Actors Guild and the Society of Directors and Choreographers. She holds a Master of Fine Arts in Acting from the University of Alabama, a Bachelor of Arts in Theatre from the University of Southern California, and is a Certified Movement Analyst through the Laban/Bartenieff Institute of Movement Studies in NYC.

WILLIAM TEAGUE

(Production Manager)

William is the Chair of the University of Alabama Department of Theatre and Dance. He has worked extensively in outdoor drama, television, film and special event production as well as legitimate theatre and dance. He has lighted University theatre and dance performances at the Kennedy Center in Washington, as well as the Biennial Dance Festival at the Universite de Lumiere in Lyons, France. He co-designed and still serves as Technical Director for *Martha's Sewing Room*, one of the longest running and most viewed shows on Alabama Public Television. Professor Teague received the Alabama National Alumni Association's 2004 'Outstanding Commitment to Teaching Award', and in 1996, was named 'Design and Technology Educator of the Year' by USITT (MFA, Florida State University).

ALLISON HETZEL

(Dialects)

Allison is Associate Professor of Voice and Acting at the University of Alabama. She is certified as an Associate Teacher of Fitzmaurice Voicework (2008). Allison was one of the vocal coaches for the 2011 summer season at the Colorado Shakespeare Festival in Boulder, Colorado. She wrote and performed *Considering Georgia O'Keeffe*, which she performed in August 2009 and 2010 at the Edinburgh Fringe Festival as well as the East to Edinburgh Festival 2010 in New York City at 59E59 Theaters. Allison received her MFA in Voice and Acting Pedagogy from Virginia Commonwealth University, and is a member of the Voice and Speech Trainers Association (VASTA).



* Member of Actors' Equity Association. An Equity approved showcase. ACTORS' EQUITY ASSOCIATION (AEA) founded in 1913, represents more than 45,000 actors and stage managers in the United States. Equity seeks to advance, promote and foster the art of live theatre as an essential component of our society. Equity negotiates wages and working conditions, producing a wide range of benefits, including health and pension plans. AEA is a member of the AFL-CIO, and is affiliated with FIA, an international organization of performing arts unions. The Equity emblem is our mark of excellence. www.actorsequity.org